

ALUEET & JÄRJESTÖT –KUMPPANUUDESSA KOHTI HYVINVOINTIA

COUNTIES & ASSOCIATIONS –IN PARTNERSHIP FOR WELLBEING

23.10.2024

Webinar



{ Kumppanuusohjelma
Partnerskapsprogrammet
Partnership programme



Ohjelma ja aikataulu | Programme and schedule

14.00 – **Aura Tarjanne (FI)**, Järjestöjen sote-muutostuki, HyTe ry

14.25 – **Marianne Neijonen (EN)**, Organizational cooperation in the city of Helsinki

14.45 – **Mahsa Masoud (FI/EN)**, MOKIVA-projekti – Monikielisen verkkoauttamisen konsepti ja kokeilu, Länsi-Uudenmaan hyvinvointialue

15.05 – Tauko 5 min

15.10 – **Hanna Valkeapää (EN)**, PTV ja järjestöyhteistyön kehittäminen, Varsinais-Suomen hyvinvointialue

15.30 – **Henna Salonen, Liisi Rwambiwa ja Reetta Salonen (FI)**, Järjestöyhteistyön rakenteita kehitetään VAKEssa, Vantaan ja Keravan hyvinvointialue

15.50 – Tilaisuuden loppusanat | Final words

The wellbeing services counties and cooperation with associations

Järjestöjen sote-muutostuki
Aura Tarjanne HyTe ry
[23.10.2024]



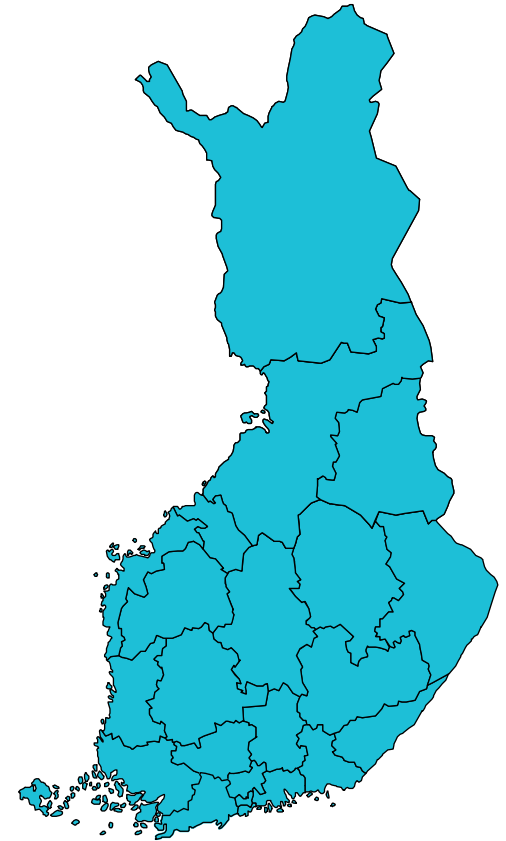
Overview – Social and Health Care Reform (SOTE Reform)

- The wellbeing services counties were established as part of the reform of healthcare, social welfare, and rescue services.
- The reform aims to create more equal access to services and reduce health and well-being disparities among people.
- As of January 1, 2023, responsibility for organizing social, healthcare, and rescue services was transferred to 21 newly established wellbeing services counties

[STM: Wellbeing services counties will be responsible for organising health, social and rescue services](#)

Wellbeing services counties

- 1) Central Finland
- 2) Central Ostrobothnia
- 3) Central Uusimaa
- 4) East Uusimaa
- 5) Helsinki*
- 6) Kainuu
- 7) Kanta-Häme
- 8) Kymenlaakso
- 9) Lapland
- 10) North Karelia
- 11) North Ostrobothnia
- 12) North Savo
- 13) Ostrobothnia
- 14) Pirkanmaa
- 15) Päijät-Häme
- 16) Satakunta
- 17) South Karelia
- 18) South Ostrobothnia
- 19) South Savo
- 20) Southwest Finland
- 21) Vantaa and Kerava
- 22) West Uusimaa
- 23) Åland*



[STM: Wellbeing services counties and their municipalities](#)

* The City of Helsinki and Åland do not form wellbeing services counties but are responsible for organising health, social and rescue services in their areas.



Support for associations during the SOTE transition 2021-2024 (sote-muutostuki)

- The aim is to **establish and integrate cooperation between wellbeing services counties and associations** into permanent operations, benefiting residents and clients.
- **Seven association experts** and a coordinator work in different regions to promote the aim.


 Pohjois-Karjalan
Sosiaaliturvayhdistys ry


Lapin sosiaali- ja
terveysturvayhdistys ry

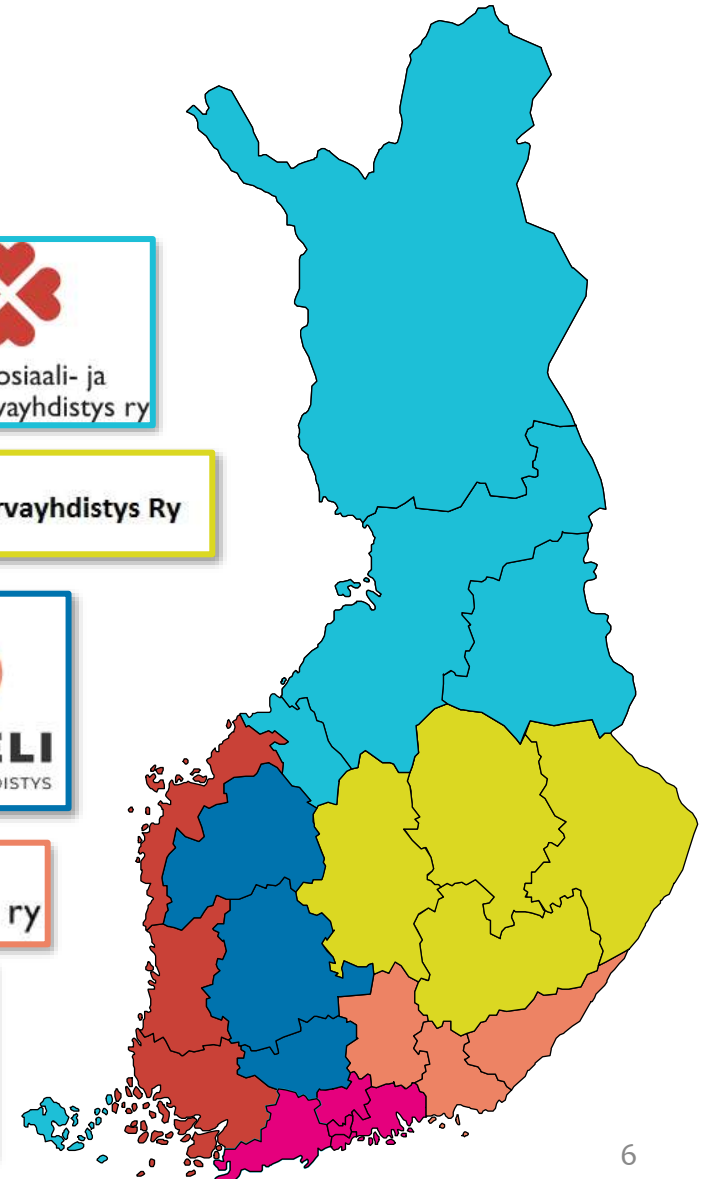
 Pohjois-Savon Sosiaaliturvayhdistys Ry


SATAKUNNAN
YHTEISÖKESKUS


ARTTELI
KUMPPANUUSYHDISTYS

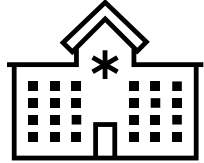
 Kymen-Karjalan
sosiaali- ja terveysturva ry


HyTe



Wellbeing services counties, municipalities, and social and health associations are united by a shared goal: the wellbeing of the people.

Responsibilities of Wellbeing Services Counties and Municipalities in Promoting Health and Wellbeing



WELLBEING SERVICES COUNTY

Promoting the wellbeing, health and safety of residents.

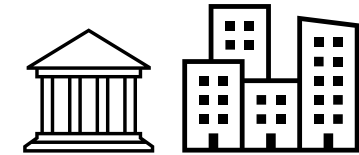
Health care:

- Primary health care
- Specialized health care
- Rescue services
- Mental health and substance abuse services
- Student welfare

Social Services:

- Social work and counseling
- Services for persons with disabilities
- Services for children, young people, and families

Rescue services



MUNICIPALITY

A comprehensive promotion of wellbeing, health, and safety.

Education services:

- Culture
- Library
- Education
- Early childhood education
- Youth services
- Sports

Economic development services:

Employment, integration, tourism.

Technical services:

Urban planning, environmental health, city maintenance.

Cooperation between the wellbeing services counties and municipalities will focus on **promoting health and wellbeing**

Additionally, private operators along with **organizations and associations will complement public health and social services.**

Wellbeing services counties and municipalities must collaborate with organizations, as mandated by law

Act on Organising Healthcare and Social Welfare Services 612/2021

6§ Promoting health and wellbeing in the municipality

Municipalities

- Municipalities collaborate in promoting wellbeing and health within the community with other public entities, private companies, and non-profit organizations involved in wellbeing and health promotion work.
- The working conditions and influence of associations that promote wellbeing and health need to be improved.

7§ Promoting health and wellbeing in the Wellbeing services county

Wellbeing services county

- Collaboration must be established in promoting wellbeing and health within the wellbeing services county, involving other public actors, private companies, and associations that operates in this area
- The working conditions and influence of associations that promote wellbeing and health must be improved
- Negotiations should be held at least once a year regarding the goals, actions, collaboration, and monitoring of wellbeing and health promotion

Why is it important for associations and the public sector to work together?

- Associations have an important role to play in promoting health, wellbeing and safety. They
 - **enrich social and health services,**
 - **promote health and wellbeing,**
 - **increase security and prevent marginalization.**
- Cooperation is important to ensure that the support and expertise provided by associations are made available to people in municipalities and wellbeing services counties, **preventing any gaps in the service.**
- Low-threshold services and preventive support provided by associations can help prevent or **delay the need for people to access health service.**
- For example, social and health associations **provide** opportunities for recreation and socialising, support for lifestyle changes **and during crises, as well as peer support for individuals with serious illnesses.**

Associations have an important role in promoting the well-being, the health and the safety

Health and social services



- Peer support and support persons
- Support in crisis
- Guidance and counselling
- Rehabilitative activities
- Working on homelessness
- Help with violence in close relationships
- Support for informal carers
- Rehabilitative activities
- Individual and group coaching
- Support for use of services

Promoting health and wellbeing



- Educational work
- Open meeting places for different groups of people
- Friendship work
- Group activities for special groups
- Summer camps
- Sports and leisure groups
- Discussion groups in different languages and for different groups of people

Rescue services



- Contracted fire brigades
- Voluntary civil protection
- Safety training
- Outreach work
- Advice on self-preparedness

Participation



- Channelling the voices of different groups of people into decision-making and development
- Providing community
- Integration and multiculturalism work
- Education in digital skills
- Democracy education

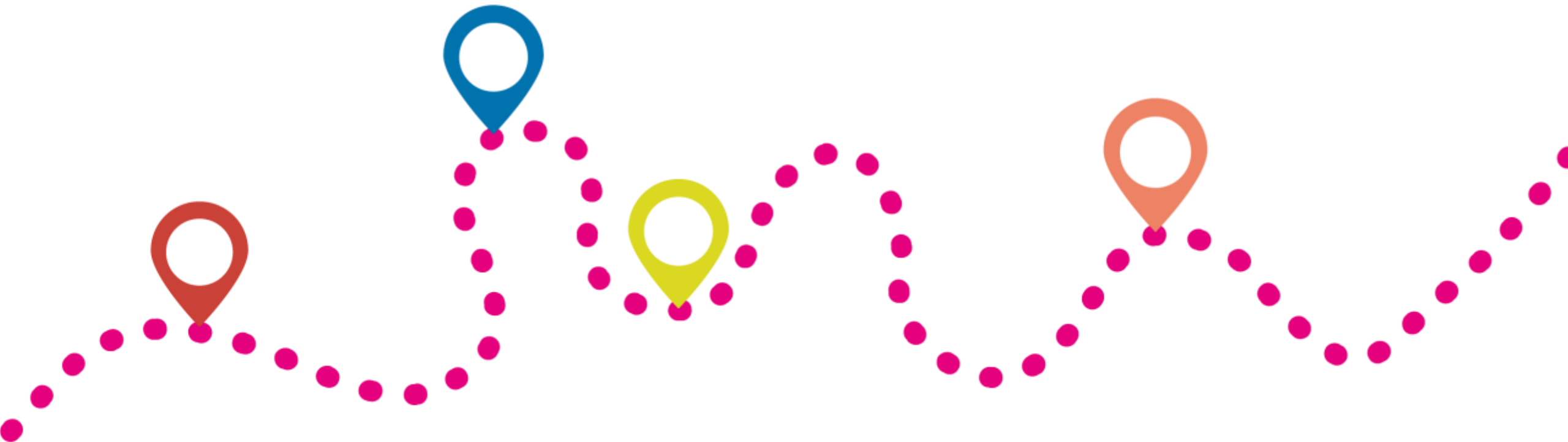
Why it is important to promote the working conditions and influence of associations?

In order to be able to support welfare areas and municipalities in their tasks, associations need grants and facilities for their work, as well as opportunities to participate in decision-making and the development of services.

Why do we need structures for cooperation between associations and the public sector?

With so many associations, of different sizes and with such a wide range of activities, it would be difficult to get the views of all of them separately involved in the development of services and decision-making in the region.

To ensure that their expertise and the voices of the groups they represent are heard in services and decision-making, structures are needed for cooperation with the public sector.



What has been created?

Structures for cooperation with associations
in wellbeing services counties

Forms of cooperation with associations in the wellbeing services counties

- **Structure of association cooperation**

advisory board, association forum/
association day and networks

- **Coordination of cooperation**

coordinator or contact persons (in the wellbeing services county, municipalities, networks and associations)

- **Joint development of cooperation**

guideline documents, policies and participation in development groups and project cooperation

- **Operational cooperation**

cooperation on facilities, events, communication and grants to associations

- **Cooperation with experts**

lectures, working in pairs and exchanges of experts

- **Contractual cooperation**

project letters of intent, cooperation agreements, participation in steering groups, coordination of networks

Advisory boards as structure of association cooperation

- In many wellbeing services counties, the central structure for cooperation with associations is an advisory board.
- Their names and structures vary, but their tasks are essentially the same.
- They bring together associations from different sectors and provide a platform for the wellbeing services county, municipalities and other public actors.



Situation 08/2024

An association-based cooperation structure

Etelä-Pohjanmaa	Järjestöneuvosto
Etelä-Savo	Järjestöneuvottelukunta Yhes
Kainuu	Kainuun järjestöasiainneuvottelukunta JANE -20
Kanta-Häme	Järjestöneuvottelukunta
Keski-Pohjanmaa	Järjestöjen työryhmä
Keski-Suomi	Keski-Suomen Järjestöareena, Järjestöjen ja maakunnan kumppanuuspöytä
Keski-Uusimaa	Järjestöneuvottelukunta
Lappi	Järjestöneuvottelukunta
Pohj.-Pohjanmaa	Järjestöyhteistyöryhmä JYRY -23
Pohjanmaa	SoTePe-järjestöneuvottelukunta
Pohjois-Karjala	Järjestöneuvottelukunta JANE, Järjestöjen kumppanuuspöytä
Pohjois-Savo	Järjestöneuvosto
Päijät-Häme	Yhdistysfoorumi 2018
Satakunta	Satakunnan järjestöjen neuvottelukunta, 3. sektorin yhteistyöryhmä, JYTRY = Satakunnan järjestöjen yhteistyöryhmä
Varsinais-Suomi	113-järjestöneuvottelukunta, Mielenterveys- ja päihdejärjestöjen neuvottelukunta
<i>Forming: Länsi-Uusimaa</i>	<i>Järjestöfoorumi/järjestöneuvottelukunta</i>

Cooperation structure attached to/established by the wellbeing services county

Etelä-Karjala	Etelä-Karjalan Kumppanuuspöytä
Etelä-Savo	Yhes-järjestöneuvottelukunta
Helsinki	Helsingin kaupungin järjestöneuvottelukunta
Itä-Uusimaa	Itä-Uudenmaan Kumppanuuspöytä
Kainuu	Kainuun JANE
Keski-Pohjanmaa	Pyöreän pöydän keskustelut
Keski-Suomi	Keski-Suomen hyvinvointialueen järjestöjen ja seurakuntien vaikuttamistoimielin
Kymenlaakso	Kymenlaakson järjestöjen neuvottelukunta
Lappi	Järjestökuulemiset, järjestöneuvottelukunta
Pirkanmaa	Pirkanmaan järjestöyhteistyöryhmä
Pohjois-Karjala	Pohjois-Karjalan järjestöasiain neuvottelukunta JANE, Järjestöjen kumppanuuspöytä
Pohj.-Pohjanmaa	Järjestöyhteistyöryhmä JYRY ja sote-toimialueiden järjestöverkostot
Pohjanmaa	Eri toimialojen kumppanuuspöydät
Pohjois-Savo	Pohjois-Savon järjestöneuvosto (vapaaehtoinen vaikuttamistoimielin)
Päijät-Häme	Päijät-Hämeen järjestöneuvottelukunta
Satakunta	Elinvoima- ja yhteistyöneuvottelukunta
Vantaa-Kerava	Vantaa-Keravan järjestöyhteistyön neuvottelukunta
Varsinais-Suomi	113-järjestöneuvottelukunta, Mielenterveys- ja päihdejärjestöjen neuvottelukunta, vuosittainen Järjestöareena, VSLJ-yhteistyöfoorumi

Examples of cooperation structures (in Finnish)

Pohjois-Karjalan Järjestöasiain neuvottelukunta JANE

- Pohjois-Karjalan maakunnan järjestöjen yhteinen toimintaelin ja yhteistyörakenne.
- Toimii järjestö- ja yhdistystoiminnan asiantuntijaryhmänä/virallisena POKAT-teemaryhmänä Pohjois-Karjalan maakuntaliitossa.
- Jäsenet edustavat järjestöjä eri toimialoilta.
- Perustettu vuonna 2008
- Hyvinvointialueen kehittämiseen liittyviä asioita tuodaan käsittelyyn JANEen.

Keski-Suomen järjestöyhteistyön asiakirjan sisältö

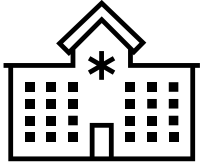
Yhteistyön rakenteet

- Nimetty järjestöyhdyshenkilö
- Järjestöjä on kuultava strategiaa ja muita toimintaa ohjaavia asiakirjoja valmisteltaessa
- Järjestöyhteistyö huomioidaan strategiassa, talousarvioin toiminnallisissa tavoitteissa ja muissa toimintaa ohjaavissa asiakirjoissa.
- Järjestöjen ja seurakuntien vaikuttamistoimielin kokoaa erilaisten järjestöjen edustajat käymään vuoropuhelua hyvinvointialueen kanssa.

Vantaan ja Keravan hyvinvointialueen hyte-neuvottelut

- Osallistujat: hyvinvointialue, kunnat (Vantaa ja Kerava), HUS, järjestöt
- Tavoite: hyte-tilannekuvan muodostaminen ja päivittäminen sekä alueellisen hyvinvointisuunnitelman ja -kertomustyön tuki
- Yhteistyönpainopistealueita ovat osallisuus, mielen hyvinvointi sekä hyvinvointia tukevat elintavat, joihin yhdessä panostamalla tuetaan mielekkään arjen toteutumista.

Grants to associations



WELLBEING SERVICES COUNTY

The funded activities must be linked to the tasks of the welfare area, i.e.

- the organisation of social welfare, health care and rescue services, or
- key phenomena in the promotion of well-being, health and safety.

Grants are often focused on activities that promote, for example, the strategy and objectives of the well-being region.



MUNICIPALITY

The funded activities must be linked to the tasks of the municipality, i.e.

Sectoral grants (eg.):

- Education
- Sports
- Culture
- Youth services

* With the exception of Helsinki, where all grants are awarded on a sectoral basis

Wellbeing Services County grants to associations

- Wellbeing Services Counties award grants to registered social and health associations and other similar associations that **promote the wellbeing and health of the residents.**
- Wellbeing services county defines the total amount for the grants to be distributed as part of the wellbeing services countys overall budget in the county council.
- The responsible authorities for awarding grants vary from one region to another.
- Types of grants could be general grants, partnership grants, development grants, operating grants, thematic grants, etc.



Associations as part of service platforms

[THL - Service concept for welfare and health promotion](#)

- In the service concept a **digital service platform** is created that compiles data of the services of wellbeing service county, municipality and associations, that support welfare in the region.
- The platform helps individuals and professionals **to find information on services** that supports wellbeing and health in one place.

- Service platform will become a **tool for professionals** that helps in guiding customers to services that support wellbeing and health.
- Associations can use [Lähellä.fi platform](#) or [Finnish Service Catalogue \(PTV\)](#) to register their activities, from where it will be transferred to the digital service platform of the wellbeing services county.



Links 1/2

Ministry on Social Affairs and Health

- [Wellbeing services counties on the map and their municipalities](#)
- [Wellbeing services counties will be responsible for organising health, social and rescue services](#) (duties, decision-making, terminology, situation pictures)

Järjestöjen sote-muutostuki (In Finnish)

- [Järjestöjen sote-muutostuki – järjestöt ihmisen tukena sote-Suomessa – Innokylä](#)
- [Järjestöt sote-toimeenpanossa \(hyvinvointialueittain\)](#)
- [Tilannekuvat hyvinvointialueittain](#): järjestöyhteistyönasiakirjat, järjestöyhteistyön rakenteet, järjestöavustukset, hyte-neuvottelut
- [Hyvät käytännöt –webinaarit 2024](#)

Links 2/2

Kuntaliitto

- [Functions of municipalities and joint municipal authorities](#)

Service concept for welfare and health promotion

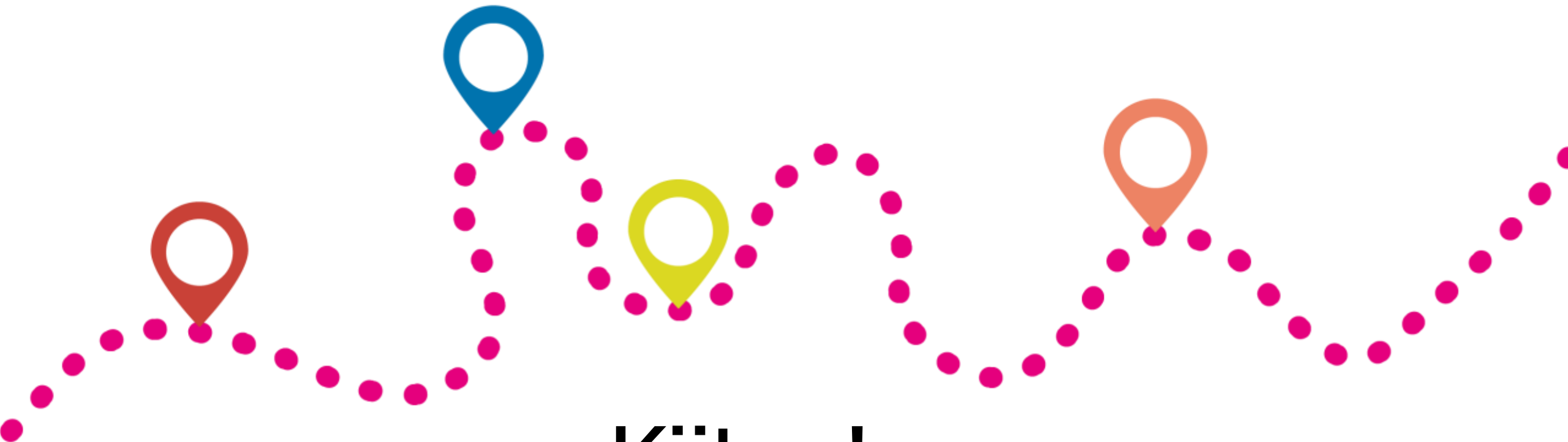
- [THL - Service concept for welfare and health promotion](#)
- [Benefits of the service concept for associations \(in Finnish\)](#)
- [Lähellä.fi-platform info and education \(in Finnish\)](#)
- [More information about Lähellä.fi and PTV \(in Finnish\)](#)



Support for associations during the SOTE transition (sote-muutostuki)



 Logos are links to the associations' websites.



Kiitos!

Järjestöjen sote-muutostuki

Annathan palautetta tilaisuudesta, kiitos!

